

# HOUSE AND LAND PACKAGES



**\$384,300**

**Isis** Brighton Facade

## Lot 14 Hyland Rise Tatachilla Estate, McLaren Vale

- Generous Site Costs And Footings Allowance - FIXED Before Contract
- Upgraded To Brighton Façade / 25 Degree Roof Pitch
- 2 Purple Pipe Recycled Water Taps
- Tiling To Living Area / Carpets To Bedrooms
- Remote Controlled Panel Lift Garage Door
- 450mm Perimeter Eaves / NBN Connection Pack
- Laundry Unit / Overhead cupboards to kitchen
- 2590mm High Ceilings (8.5 Ft) Throughout
- 20 Pack of Downlights / Quality Fixtures Throughout
- LAND SALE BY BROCK URBAN PROJECTS (\$205,500) RLA245784

June 2013

ISIS		
DIMENSIONS	SQM	SQUARES
Ground Floor	127.76m <sup>2</sup>	13.75Sqs
Porch	4.00m <sup>2</sup>	0.435qs
Garage	24.46m <sup>2</sup>	2.635qs
Total area	156.22m <sup>2</sup>	16.825qs
WIDTH: 8.63m		
DEPTH: 20.39m		



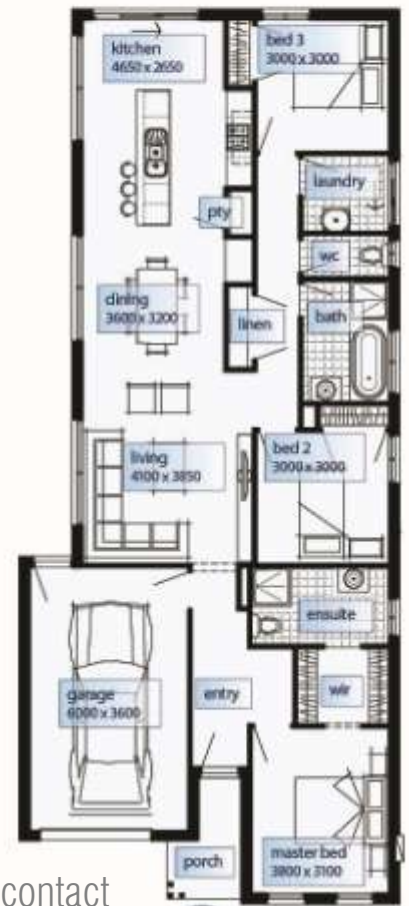
3



2



1



For more information please contact  
**Brian Bellinger – 0412 833 147**



Finance to approved applicants only. Images shown for illustrative purposes and may not represent the final product. Prices are based on availability and price of land. Simonds reserves the right to alter any price or substitute any home without prior notice. All house and land packages are subject to developers' final approval. In the event that a Homesite does not have Survey Pegs in place to identify lot boundary then an additional charge will be added to the cost of the house.

1300 SIMONDS [www.simonds.com.au](http://www.simonds.com.au)

**Tatachilla**  
E S T A T E

**SIMONDS**  
we're in it together